

ARE YOU STRUGGLING WITH BINGE EATING DISORDER?

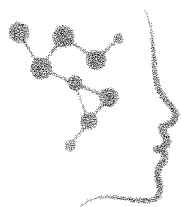
If you have Binge Eating Disorder, you may be eligible for the SOL-BED-301 study.

Eligible Participants* :

- Are 18-55 years old
- Are currently experiencing binge eating episodes twice per week for at least 6 months, characterized by the following:
 - Eating much more rapidly than normal
 - Eating until feeling uncomfortably full
 - Eating large amounts of food when not feeling physically hungry
 - Eating alone because of feeling embarrassed by how much one is eating
 - Feeling disgusted with oneself, depressed, or very guilty afterward

*Additional eligibility criteria apply

See if the SOL-BED-301 study is the right option for you!



PSYCH
ATLANTA
MEDICATION • COUNSELING
• CLINICAL TRIALS •

PSYCH ATLANTA
(770) 422-2846
1012 COGGINS PLACE
MARIETTA, GA 30060