

Learn more  
about the **JUNIPER**  
study today!

# JUNIPER

MDD STUDY

A Research Study for Adults with  
Major Depressive Disorder (MDD)



Are you experiencing a  
**low** or depressed **mood**  
and a **decreased** interest in  
pleasurable activities?



Do you have feelings  
of **guilt** or worthlessness,  
**lack** of energy, or  
**poor** concentration?

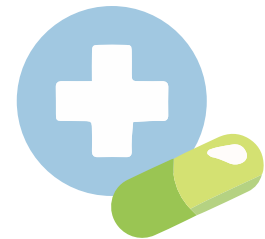
## YOU MAY BE ELIGIBLE TO PARTICIPATE IF YOU:

**18-65**  
**YRS OLD**

Are between the  
ages of 18 and 65  
years old



Have been diagnosed  
with major depression by  
your healthcare provider



Have not responded  
to at least 1 but no  
more than 3 treatment  
options for depression

*Additional research study eligibility requirements apply.*

## HOW CAN I LEARN MORE ABOUT THE STUDY DRUG CENTANAFADINE AND THE JUNIPER STUDY?

To learn more, please talk to your healthcare professional.

Additional information on this research study can be found by visiting [ClinicalTrials.gov](https://ClinicalTrials.gov)  
and searching the study protocol number: 405-201-00062 or NCT #XXXXXXX

Psych Atlanta - Research  
Phone: 770-422-2846  
Email: [research@psychatlanta.com](mailto:research@psychatlanta.com)